

TO5901

Ariazone 901 Semi Automatic Charging Station

Description

This is the smallest and lightest weight charging station on the market. At 29Kg this station is light enough to be portable. This unit can be configured for either 11kg or 22kg cylinders.

Features

- Manual override option
- Oil Injection
- 11Kg Refrigerant cylinder
- Thermal Protection



ariazone

Technical Specifications

Vacuum Pump: 57 L/min (1.5CFM)
Load Cell: 60Kg with 150% overload capacity
Recovery Rate: 220g/min (liquid state)

Dimensions:

Height: 460mm
Width: 440mm
Depth: 380mm
Weight: 29Kg

TO5020

Ariazone 500-1 H/D Semi Automatic Charging Station

Description

If you are looking for the best value for money, full A/C service system on the market, look no further. This particular model 5001 incorporates all of Ariazone's quality and reliability and at a very low cost. Easy operation and full electronic function control gives you less down time and more money in your pocket.

Features

- Manual override option
- Oil Injection
- 11Kg Refrigerant cylinder
- Thermal Protection



ariazone

Technical Specifications

Vacuum Pump: 100 L/min (3.5CFM)
Load Cell: 60Kg with 150% overload capacity
Recovery Rate: 360g/min (liquid state)

Dimensions:

Height: 1090mm
Width: 620mm
Depth: 600mm
Weight: 70Kg

TO5029

Ariazone 500-1P H/D Semi Automatic Charging Station

Description

If you are looking for the best value for money, full A/C service system on the market, look no further. This particular model 5001 incorporates all of Ariazone's quality and reliability and at a very low cost. Easy operation and full electronic function control gives you less down time and more money in your pocket.

Features

- Manual override option
- Oil Injection
- 11Kg Refrigerant cylinder
- Thermal Protection
- Includes Thermal Printer



ariazone

Technical Specifications

Vacuum Pump: 100 L/min (3.5CFM)
Load Cell: 60Kg with 150% overload capacity
Recovery Rate: 360g/min (liquid state)

Dimensions:

Height: 1090mm
Width: 620mm
Depth: 600mm
Weight: 70Kg

TO5033

Ariazone 5001 Fully Automatic Charging Station

Description

Fully automatic unit suitable for servicing passenger, light commercial vehicles including trucks and mini buses A/C systems. Simple dashboard (four arrows, plus "start" and "stop" button) allows quick navigation through the menu in various languages upon selection. An on-board database with over 1500 car and truck references allows the user to find proper charging weights and lubricant types. Easy connection to a PC or laptop by USB port. Refrigerant management software allows monitoring of total amount of refrigerant recovered or charged. The complete procedure is printed for future reference.

Features

- Manual override option
- Automatic oil & dye injection
- 22Kg Refrigerant cylinder
- Thermal printer
- Includes vehicle database



Technical Specifications

Vacuum Pump: 100 L/min (3.5CFM)
Load Cell: 60Kg with 150% overload capacity
Recovery Rate: 360g/min (liquid state)

Dimensions:

Height: 1090mm
Width: 580mm
Depth: 620mm
Weight: 85Kg

TO5060

Ariazone 6001 Fully Automatic Charging Station

Description

This system is suitable for current automotive refrigerants and adaptable to future generation refrigerants. Adapting new generation electronic intelligence for function control and interfacing with OBD, PC, laptop and wireless and blue tooth communication. Additional features include - Electronic control of liquid to recovery pump under all conditions, self test and fault diagnostics, air conditioning system performance testing, wireless temperature sensors, large colour touch screen with function icons and large LCD display for suction/discharge pressure. The complete procedure is printed for future reference.

Features

- Manual override option
- Automatic oil & dye injection
- 22Kg Refrigerant cylinder
- Thermal printer
- Includes vehicle database



Technical Specifications

Vacuum Pump: 168 L/min (6CFM)
Load Cell: 60Kg with 150% overload capacity
Recovery Rate: 600g/min (liquid state)
Weight: 100Kg

TO8002

Ariazone 8001 Commercial Charging Station

Description

The 8001 is a very user friendly tool for diagnosing and servicing large capacity air conditioning systems, such as large bus or rail systems.

Features

- Manual override option
- Automatic oil & dye injection
- 45Kg Refrigerant cylinder
- Thermal printer
- Includes vehicle database



Technical Specifications

Vacuum Pump: 168 L/min (6CFM)
Recovery Rate: 1200g/min (liquid state)

Dimensions:

Height: 1190mm
Width: 660mm
Depth: 840mm
Weight: 166Kg

TO9810

Robinair 34988I Fully Automatic Charging Station

Description

This unit flushes all internal lines to ensure there is no contamination when changing from servicing a Hybrid vehicle to a standard vehicle. This makes for safe and hassle free operation.

Features

- Manual override option
- Automatic oil & dye injection
- 14Kg Refrigerant cylinder
- Thermal printer
- Internal flush operation
- Gas cylinder warming blanket
- 22Kg cylinder auto refill
- Optional comprehensive vehicle database
- Operator code



AN SPX BRAND

Technical Specifications

Vacuum Pump: 71 L/min (3CFM)
Recovery Rate: 360g/min (liquid state)

Dimensions:

Height: 1430mm
Width: 915mm
Depth: 609mm
Weight: 108Kg

TO9890

Robinair AC1234-7 (HFO-1234yf) Fully Automatic Charging Station

Description

This unit flushes all internal lines to ensure there is no contamination when changing from servicing a Hybrid vehicle to a standard vehicle. This makes for safe and hassle free operation.

Features

- Manual override option
- Automatic oil & dye injection
- 10Kg Refrigerant cylinder
- Thermal printer
- Internal flush operation
- Gas cylinder warming blanket
- Automatic internal tank refill
- Basic database
- Operator code
- Fully SAE compliant (SAE2844, 2099, 2788)



AN SPX BRAND

Technical Specifications

Vacuum Pump: 170 L/min (6CFM)
Recovery Rate: 70Kg/min (liquid state)

TO9816

Robinair 34788I Semi Automatic Charging Station

Description

This unit flushes all internal lines to ensure there is no contamination when changing from servicing a Hybrid vehicle to a standard vehicle. This makes for safe and hassle free operation.

Features

- Manual oil & dye injection
- Internal flush operation
- 14Kg Refrigerant cylinder
- Gas cylinder warming blanket
- Optional vehicle database



AN SPX BRAND

Technical Specifications

Vacuum Pump: 71 L/min (3CFM)
Recovery Rate: 360g/min (liquid state)

Dimensions:

Height: 1270mm
Width: 834mm
Depth: 584mm
Weight: 107Kg

TO3260
CPS Compact Charging Station

Description
Ideal for mobile vans, as all components are carried within a manageable lightweight frame with compact dimensions for ease of use. Manual, easy to use and portable.

Features
• Sturdy powder coated portable trolley

Technical Specifications
Vacuum Pump: 52 L/min (1.8CFM)
Scale Capacity 100Kg



CPS Charging Stations

- TO3210-1** 48 L/min vacuum pump
- TO3210** 96 L/min vacuum pump
- TO3210-2** 144 L/min vacuum pump

Description
Ideal for the Workshop. All components are carried within a lightweight frame. Reduces the requirement for individual components

Features
• 4 way manifold with 72" hoses and couplers
• Sturdy powder coated portable trolley

Technical Specifications
Scale Capacity: 100Kg



Robinair Charging Stations

- TO3205** 35 L/min vacuum pump
- TO3206** 71 L/min vacuum pump
- TO3207** 118 L/min vacuum pump

Description
Ideal for the Workshop. All components are carried within a lightweight frame. Reduces the requirement for individual components

Features
• R134a 4 way manifold set with 72" hoses and couplers
• Sturdy powder coated portable trolley

Technical Specifications
Scale Capacity: 100Kg



TO0400

CPS ProSet Recovery Machine with Oil Separator

Recovers all commonly used CFC, HFC, HCFC Refrigerants (including Puron® R-410a)
Suitable to recover both liquid and vapour

Features

Heavy duty oil filled compressor
Includes Oil Separator

Technical Specifications

Direct Liquid Recovery: 19.8Kg/hr
Safety Switch Cut Off: 550 Psi
Weight: 12.6Kg
Power Source: 220-240V 50Hz

Internal Filter: TO3228
Fan Blade: TO4909
High Pressure Switch: TO3266



cps®

TO3221

CPS ProSet Recovery Machine

Recovers all commonly used CFC, HFC, HCFC Refrigerants (including Puron® R-410a)
Suitable to recover both liquid and vapour

Features

Maintenance free oil-less compressor
Self clearing valve

Technical Specifications

Direct Liquid Recovery: 70Kg/hr
Safety Switch Cut Off: 550 Psi
Weight: 9Kg
Power Source: 220-240V 50Hz

Internal Filter: TO3228
Fan Blade: TO4909
High Pressure Switch: TO3266



cps®

TOR700

CPS ProSet Recovery Machine

Recovers all commonly used CFC, HFC, HCFC Refrigerants (including Puron® R-410a)
Suitable to recover both liquid and vapour

Features

Powerful 1hp oil-less reciprocating compressor

Technical Specifications

Direct Liquid Recovery: 161Kg/hr
Safety Switch Cut Off: 550 Psi
Weight: 16.2Kg
Power Source: 220-240V 50Hz

Filter: TO3227



cps®

TO4021

CPS TR21E Recovery Machine

The most advanced and quickest recovery unit available on the market. Recovers all commonly used CFC, HFC, HCFC Refrigerants (including Puron® R-410a)
Suitable to recover both liquid and vapour

Features

High speed 1 hp twin cylinder compressor.
Thermally Protected Motor

Technical Specifications

Liquid Recovery: 240Kg/hr
Direct Vapour Recovery: 67Kg/hr
Weight: 11.2Kg
Power Source: 220-240V 50Hz



cps®

TO9801

Robinair Minimax-RA Recovery Machine with Oil Separator

Recovers all commonly used CFC, HFC, HCFC Refrigerants (including Puron® R-410a) The MINIMAX-RA comes complete with an oil separation system. The unit is designed specifically for automotive applications. During the recovery of refrigerant, oil is separated and can be measured. This allows the technician the ability to accurately access the quantity of oil to be put back into the system. The separator can also be bypassed when required. Suitable to recover both liquid and vapour

Features

1/2 hp Direct Drive AC Brushless Motor. Proprietary "Oil-less" compressor capable of handling both liquid and vapour
Includes Oil Separator

Technical Specifications

Direct Liquid Recovery: 90Kg/hr
Safety Switch Cut Off: 550 Psi
Weight: 12.7Kg
Power Source: 220-240V 50Hz

Filter: TO1742
Oil Separator: TO4915
High Pressure Switch: TO9829



TO6014

Ariazone 601HD Recovery & Recycle Machine with Oil Separator

Recovers all commonly used CFC, HFC, HCFC Refrigerants (including Puron® R-410a). A lightweight, durable recovery/recycle unit ideal for the mobile specialist or small workshop professional. Featuring a large recovery pump, large capacity oil separator heat exchanger, condenser coil and fan to increase recovery rate. Additional features - suction & discharge gauges, liquid control device, high pressure cut out, large capacity filter and complete recovery cut out. The 601 is a smart investment. Suitable to recover both liquid and vapour

Features

5 cm³, 150 watt High volume pump with liquid & thermal protection
Zero system pressure cut out switch
Includes Oil Separator

Technical Specifications

Vapour Recovery Rate: 180gm/min
Weight: 13.5Kg
Power Source: 220-240V 50Hz



TO4022

CPS TRA21E Recovery & Recycle Machine with Oil Separator

The most advanced and quickest recovery unit available on the market. Recovers all commonly used CFC, HFC, HCFC Refrigerants (including Puron® R-410a). Suitable to recover both liquid and vapour. Recycles gas in a single pass.

Features

High speed 1 hp twin cylinder compressor.
Includes Oil Separator
Thermally Protected Motor
Protective heavy duty roll cage

Technical Specifications

Liquid Recovery: 240Kg/hr
Direct Vapour Recovery: 67Kg/hr
High Pressure Shut Off: 525 Psi
Weight: 14.6Kg
Power Source: 220-240V 50Hz



TO3203

CPS AR500E Recovery & Recycle Machine

Recovers all commonly used CFC, HFC, HCFC Refrigerants (including Puron® R-410a). Suitable to recover both liquid and vapour. Recycles gas in a single pass.

Features

Maintenance free oil-less compressor

Technical Specifications

Direct Liquid Recovery: 70Kg/hr
Weight: 11Kg
Power Source: 220-240V 50Hz

Filter: TO3229
Fan Blade: TO4909
High Pressure Switch: TO3266



TO9802

Robinair Minimax-RR Recovery & Recycle Machine with Oil Separator

Recovers all commonly used CFC, HFC, HCFC Refrigerants (including Puron® R-410a). The MINIMAX-RR is ideal for the busy workshop or mobile service vans. The Recycler is detachable enabling the technician to recover refrigerant from multiple systems and then recycle for re-use. Suitable to recover both liquid and vapour

Features

1/2 hp Direct Drive AC Brushless Motor. Proprietary "Oil-less" compressor capable of handling both liquid and vapour.
Self purge feature
Includes Oil Separator
Includes: 22kg Recovery Cylinder, Manifold set, Filter and hoses

Technical Specifications

Direct Liquid Recovery: 90Kg/hr
Safety Switch Cut Off: 550 Psi
Weight: 12.7Kg
Power Source: 220-240V 50Hz

Filter: TO1742 and TO1743
Oil Separator: TO4915
High Pressure Switch: TO9829

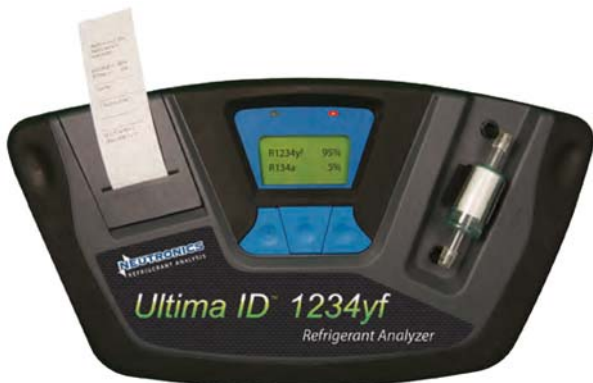


TO0054

Refrigerant Identifier with Printer

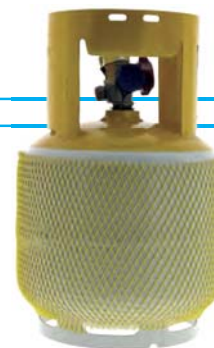
Unit will identify R12, R134a, HFO-1234yf, R22 hydrocarbons and air.
12-15V power requirement
Resolution 0.1%
Ergonomically designed case

Filter to Suit: TO0059
Battery Pack to suit: TO0058



TO400T

22Kg Twin Tap Recovery Cylinder



TO0061

Mini-ID Refrigerant Identifier

Basic R134a identifier. Simple to use. Provides a Pass or Fail result

Filter to suit: TO0062



TO7184

CPS Compact Vacuum Pump 48 L/min

2 stage operation - provides a high evacuation level and faster evacuation times

Features

Oil drain port - for easy vacuum pump oil maintenance

Technical Specifications

Capacity: 48 L/min (2CFM)
Micron Rating: 15
Motor Size: 1/4hp
Fitting: 1/4" SAE x 1/2" ACME x 3/8" SAE adaptor
Oil Capacity: 350ml
Weight: 5.5Kg

Base Plate: TO7186
Handle: TO7187
Oil Fill Plug: TO7183



cps[®]

TO7193

CPS Vacuum Pump 48 L/min

2 stage operation - provides a high evacuation level and faster evacuation times

Features

Oil drain port - for easy vacuum pump oil maintenance

Technical Specifications

Capacity: 48 L/min (2CFM)
Micron Rating: 15
Motor Size: 1/4hp
Fitting: 1/4" SAE x 1/2" ACME x 3/8" SAE adaptor
Oil Capacity: 350ml
Weight: 8Kg

Base Plate: TO7186
Handle: TO7185
Oil Fill Plug: TO7183



cps[®]

TO7194

CPS Vacuum Pump 96 L/min

2 stage operation - provides a high evacuation level and faster evacuation times

Features

Oil drain port - for easy vacuum pump oil maintenance

Technical Specifications

Capacity: 96 L/min (4CFM)
Micron Rating: 15
Motor Size: 1/3hp
Fitting: 1/4" SAE x 1/2" ACME x 3/8" SAE adaptor
Oil Capacity: 400ml
Weight: 10Kg

Base Plate: TO7186
Handle: TO7185
Oil Fill Plug: TO7183



cps[®]

TO7195

CPS Vacuum Pump 144 L/min

2 stage operation - provides a high evacuation level and faster evacuation times

Features

Oil drain port - for easy vacuum pump oil maintenance

Technical Specifications

Capacity: 144 L/min (6CFM)
Micron Rating: 15
Motor Size: 1/2hp
Fitting: 1/4" SAE x 1/2" ACME x 3/8" SAE adaptor
Oil Capacity: 400ml
Weight: 10.2Kg

Base Plate: TO7186
Handle: TO7185
Oil Fill Plug: TO7183



cps[®]

TO9906

ACME Compact Vacuum Pump 48 L/min

2 stage operation - provides a high evacuation level and faster evacuation times

Features

Oil drain port - for easy vacuum pump oil maintenance

Technical Specifications

Capacity: 48 L/min (1.9CFM)

Micron Rating: 15

Motor Size: 1/4hp

Fitting: 1/4" SAE

Oil Capacity: 350ml

Weight: 5Kg



TO9900

ACME Vacuum Pump 48 L/min

2 stage operation - provides a high evacuation level and faster evacuation times

Features

Oil drain port - for easy vacuum pump oil maintenance

Technical Specifications

Capacity: 48 L/min (1.9CFM)

Micron Rating: 15

Motor Size: 1/4hp

Fitting: 1/4" SAE

Oil Capacity: 350ml

Weight: 6.1Kg



TO9901

ACME Vacuum Pump 96 L/min

2 stage operation - provides a high evacuation level and faster evacuation times

Features

Oil drain port - for easy vacuum pump oil maintenance

Technical Specifications

Capacity: 96 L/min (4CFM)

Micron Rating: 15

Motor Size: 1/3hp

Fitting: 1/4" SAE

Oil Capacity: 450ml

Weight: 8.2Kg



TO9905

ACME Vacuum Pump 144 L/min

2 stage operation - provides a high evacuation level and faster evacuation times

Features

Oil drain port - for easy vacuum pump oil maintenance

Technical Specifications

Capacity: 144 L/min (6CFM)

Micron Rating: 15

Motor Size: 1/2hp

Fitting: 1/4" SAE

Oil Capacity: 450ml

Weight: 10.2Kg



TO9805

Robinair Vacuum Pump 35 L/min

2 stage operation - provides a high evacuation level and faster evacuation times

Features

Oil drain port - for easy vacuum pump oil maintenance

Technical Specifications

Capacity: 35 L/min (1.5CFM)
Micron Rating: 25
Motor Size: 1/4hp
Fitting: 1/4" SAE x 1/2" ACME x 3/8" SAE adaptor
Oil Capacity: 210ml
Weight: 8.2Kg

Base Plate: TO3198
Handle and switch: TO3192
Oil Fill Plug: TO5372



TO9806

Robinair Vacuum Pump 71 L/min

2 stage operation - provides a high evacuation level and faster evacuation times

Features

Oil drain port - for easy vacuum pump oil maintenance

Technical Specifications

Capacity: 71 L/min (3CFM)
Micron Rating: 25
Motor Size: 1/3hp
Fitting: 1/4" SAE x 1/2" ACME x 3/8" SAE adaptor
Oil Capacity: 300ml
Weight: 9.8Kg

Base Plate: TO3198
Handle and switch: TO3192
Oil Fill Plug: TO5372



TO9807

Robinair Vacuum Pump 118 L/min

2 stage operation - provides a high evacuation level and faster evacuation times

Features

Oil drain port - for easy vacuum pump oil maintenance

Technical Specifications

Capacity: 118 L/min (5CFM)
Micron Rating: 25
Motor Size: 1/2hp
Fitting: 1/4" SAE x 1/2" ACME x 3/8" SAE adaptor
Oil Capacity: 300ml
Weight: 10.5Kg

Base Plate: TO3198
Handle and switch: TO3192
Oil Fill Plug: TO5372



TO0102

CPS Digital Vacuum Gauge with carry case & adaptor

Features

Continual digital readout
 Automatic compensation for ambient changes
 30hr battery life with 9v Alkaline battery
 5 digit LCD
 Handy carry pouch



OG7026

Vacuum Pump Oil - 470ml

OG7027

Vacuum Pump Oil - 946ml



cps[®]

OG7028

Vacuum Pump Oil - 3.78L



cps[®]

TOOLS VACUUM PUMP OIL

CoolDrive
Technical
advice



Vacuum pump
routine maintenance



It is recommended that the Vacuum pump oil be changed after a maximum 50 hours of usage. It is also recommended that if the colour of the oil changes before this time or the systems worked on have been contaminated or subject to moisture change the oil. The purity of the oil will determine the final vacuum level achieved.



Oil change procedures: 1. Make sure the pump is warm, 2. Disconnect the mains power, 3. Remove the oil drain cap and drain the contaminated oil into a suitable container. Tilt the vacuum towards the the oil drain port, 4. Once all the oil has been drained, re-secure the oil drain cap, 5. Remove the oil fill cap and add oil until it is seen in the middle of the oil sight glass. Re-secure the oil fill cap.

TO7006**CPS Manual Charging Scales****Technical Features**

100 Kg Capacity
Remote with 1.8m (6 ft) Cord
60hr battery life (2 batteries)



cps[®]

TO9808**Robinair Manual Charging Scales****Technical Features**

100 Kg Capacity
Remote with 1.8m (6 ft) Cord
60hr battery life (2 batteries)



ROBINAIR
AN SPX BRAND

TO7840**CPS Programmable Charging Scales**

COMPUTE-A-CHARGE® 110kg Wireless Programmable Electronic Scale. CPS® Products proudly introduces its new line of wireless RF (radio frequency) controlled charging scales, which includes the industries first fully automatic programmable RF controlled unit. Wireless RF technology operates in the international ISM band for worldwide use. World's first battery operated wireless programmable charging scale. Best in class accuracy of 0.05% of reading. Powerful 2.4GHz wireless technology for a generous operation range of 9m. Remotely controlled scale platform eliminates clutter. Advanced communication software ensures uninterrupted connectivity between hand held display unit and scale platform. All controlling functions are located in the hand held display unit which also incorporates provisions for use with hanging hook and is magnetically backed for attachment to metal surfaces. The integrated solenoid charging valve is rated for R410A for fully automatic programmable operation with virtually any refrigerant

Technical Features

R/F Wireless Controller
110 Kg capacity, with 10g accuracy
8 digit hand held remote with 1.8m coil cord
Hanging hook & magnet for attaching to metal surfaces



cps[®]

TO3817
CPS A/C Flush Machine

Features

- Powered by Workshop Air
- Pressure capacity regulator 100psi
- Compressed air inlet
- Set of hoses and adaptors
- Easy access plastic filter
- Tank Capacity 8L



TO9023
CPS Flush Gun and Tank

Features

- Includes pressure regulator to reduce high pressure issues.
- An economical means of flushing contaminants and scale from A/C system components.
- Uses compressed air to propel flush solvent.

CPS Probe Tip replacement: TO1568



TO9811
Robinair Flush Kit

- An economical means of flushing contaminants and scale from A/C system components
- Uses compressed air to propel the solvent.



TO3970
Flushing Adaptor Kit

Features

- 52 flush adaptors for all airconditioning systems.



OG1011
CPS Pro Flush

- CPS Pro Flush is used for cleaning by flushing, internal components of automotive airconditioning systems.
- It may also be used for cleaning parts by immersion.
- Pro Flush is compatible with system components and seals.

5 Litre



OG1396
Evaporator Cleaner

- Exclusive foaming action washes out harmful agents that cause odour.
- This product is a cleaner, not a deodouriser!

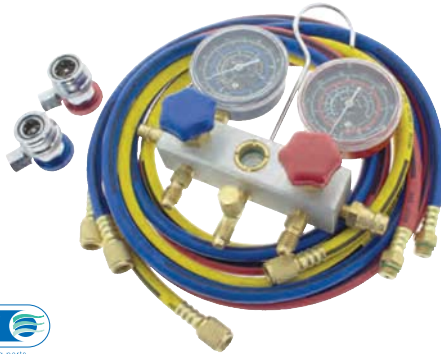


TO0001

Jayair R134a Manifold Gauge Set

Features

- 1/2" ACME fittings
- Aluminium manifold
- 63mm Gauges
- 72" hoses and couplers
- Supplied in a plastic carry case



TO0006

Jayair Illuminated R134a Manifold Gauge Set

Features

- 1/2" ACME fittings
- Aluminium manifold
- 63mm Gauges
- 72" hoses and couplers
- Illuminated with back light



TO1540

CPS Proset R134a Manifold Gauge Set

Features

- Aluminium manifold
- 63mm Gauges
- 72" hoses and couplers
- Vacuum rated to 15 micron
- Advanced 1 piece diaphragm valve design



TO1623

CPS Proset R404a Manifold Gauge Set without Hoses

Features

- 1/4" SAE fittings
- Aluminium manifold
- 63mm Gauges

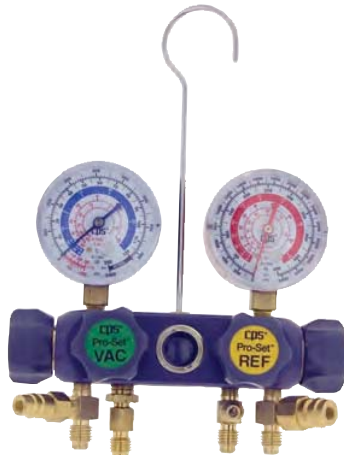


TO1548

CPS Proset R134a Manifold Gauge Set without Hoses

Features

- 1/2" ACME fittings
- 4 Valve
- Aluminium manifold
- 63mm Gauges



TO1549

CPS Proset R134a Manifold Gauge Set

Features

- 1/4" SAE fittings
- Aluminium manifold
- 63mm Gauges
- 72" hoses and couplers

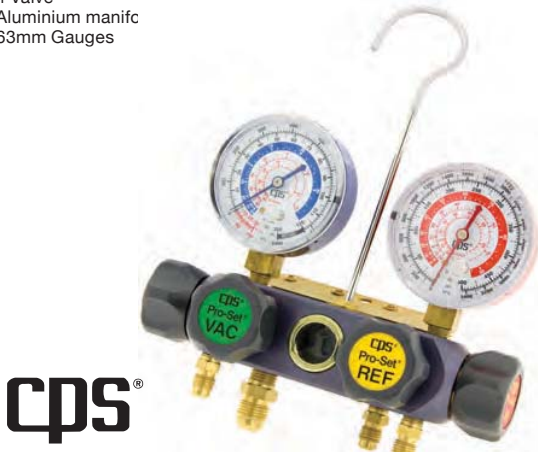


TO1571

CPS Proset R134a Manifold Gauge Set without Hoses

Features

- 1/4" SAE fittings
- 4 Valve
- Aluminium manifold
- 63mm Gauges



TO1574

CPS Workingman Series R134a Manifold Gauge Set

Features

- 1/2" ACME fittings
- Aluminium manifold
- 80mm Gauges
- Rubber gauge protectors
- 72" hoses and couplers
- Vacuum rated to 15 micron
- Advanced 1 piece diaphragm valve design



TO1577

CPS Workingman Series HFO-1234yf Manifold Gauge Set

Features

- 14mm Female fittings
- Aluminium manifold
- 80mm Gauges
- Rubber gauge protectors
- 72" hoses and couplers
- Vacuum rated to 15 micron
- Advanced 1 piece diaphragm valve design



TO1550

CPS Black Max R134a Manifold Gauge Set

Features

- Aluminium manifold
- 68mm Gauges
- 72" hoses and couplers

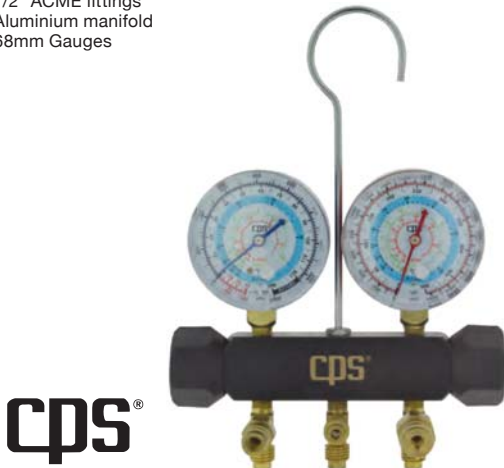


TO1551

CPS Black Max R134a Manifold Gauge Set without Hoses

Features

- 1/2" ACME fittings
- Aluminium manifold
- 68mm Gauges



TO1622

CPS Black Max R134a Manifold Gauge Set without Hoses

Features

- 1/4" SAE fittings
- Aluminium manifold
- 63mm Gauges



TO9803

Robinair R134a Manifold Set

Features

- 1/2" ACME fittings
- Brass manifold
- 68mm Gauges
- 72" hoses and couplers



TO9820

Robinair R134a Manifold Set

Features

- 1/2" ACME fittings
- Aluminium manifold
- 68mm Gauges
- 72" hoses and couplers



TO2250

CPS R12 Low Side Compound Gauge

Suitable for most R12 manifolds

TO2500

CPS R12 High Side Compound Gauge

Suitable for most R12 manifolds



TO4210

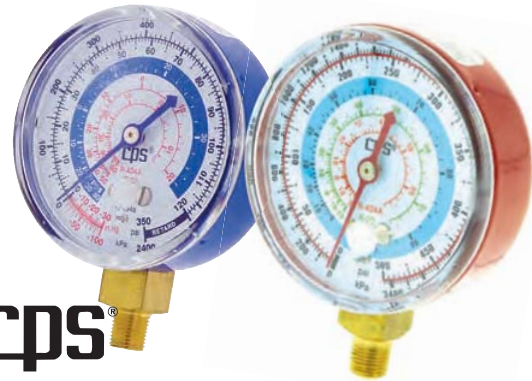
CPS R134a Low Side Compound Gauge

Suitable for most R134a manifolds (63mm)

TO4211

CPS R134a High Side Compound Gauge

Suitable for most R134a manifolds (63mm)



TO4215

CPS R134a Low Side Compound Gauge

Suitable for most R134a manifolds (80mm)

TO4214

CPS R134a High Side Compound Gauge

Suitable for most R134a manifolds (80mm)



TO5200
Gauge Lens

Screw on - 63mm



cps®

TO0052
Manifold Handwheel Set

Replacement handwheels for CPS manifolds



cps®

TO0449
Manifold Handwheel Set

Replacement handwheels for Robinair manifolds



ROBINAIR
AN SPX BRAND

TO1205
CPS ProSet Manifold Repair Kit

To suit 2 valve manifolds



cps®

TO1602
Rubber Gauge Protector Set

Red & Blue to suit 63mm gauges



cps®

TO1552
Piston Valve Assembly

To suit Black Max manifold



cps®

TO1553
Piston Valve O'ring Kit

To suit Black Max manifold



cps®

TO1554
Universal Carry Case

Suitable for manifold gauges, etc



cps®

TO9851
Manifold Wheel Set

To suit Robinair brass manifold set



TO4565
R134a High Side Charge Coupler

Low profile
High quality
Female ACME fitting
50mm overall height
Made in USA



TO4566
R134a Low Side Charge Coupler

Low profile
High quality
Female ACME fitting
50mm overall height
Made in USA



TO4567
R134a Low Side Charge Coupler

Female ACME fitting
R134a low profile coupler



TO4568
R134a High Side Charge Coupler

Female ACME fitting
R134a low profile coupler



TO2705
R134a High Side Charge Coupler

1/4" male flare fitting
High quality
Made in USA



TO2706
R134a Low Side Charge Coupler

1/4" male flare fitting
High quality
Made in USA



TO1524
R134a Coupler Repair Kit

Aeroquip Style



TO136Y
R12 Charge Hose - Yellow

Length:
900mm (36")
Fittings:
1/4" x 1/4" SAE



TO172B
R12 Charge Hose - Blue

Length:
1800mm (72")
Fittings:
1/4" x 1/4" SAE



TO172R
R12 Charge Hose - Red

Length:
1800mm (72")
Fittings:
1/4" x 1/4" SAE



TO172Y
R12 Charge Hose - Yellow

Length:
1800mm (72")
Fittings:
1/4" x 1/4" SAE



TO236B
R134a Charge Hose - Blue

Length:
900mm (36")
Fittings:
14mm x 1/2" ACME



TO236R
R134a Charge Hose - Red

Length:
900mm (36")
Fittings:
14mm x 1/2" ACME



TO236Y
R134a Charge Hose - Yellow

Length:
900mm (36")
Fittings:
1/2" x 1/2" ACME
With Ball Valve



TO272B
R134a Charge Hose - Blue

Length:
1800mm (72")
Fittings:
14mm x 1/2" ACME



TO272R
R134a Charge Hose - Red

Length:
1800mm (72")
Fittings:
14mm x 1/2" ACME



cps

TO272Y
R134a Charge Hose - Yellow

Length:
1800mm (72")
Fittings:
1/2" x 1/2" ACME
With Ball Valve



cps

TO0677
Charge Hose Rubber Seals

To suit 3/16" hose fitting
Pack of 10

TO1009
Charge Hose Rubber Seals

To suit 1/4" hose fitting
Pack of 10



cps

TO1016
Charge Hose Rubber Seals

To suit 1/2" ACME hose fitting
Pack of 10



cps

TO1027
Charge Hose Teflon Seal

To suit 1/4" hose fitting
Each



TO1316
Charge Hose Depressor

To suit 1/4" hose fitting
Pack of 10



cps

TO7104
Charge Hose Connector

1/4" x 1/4" MF suits 1/4" hose



TO1538
1/2" ACME Plastic Cap

With Straps
Pack of 6



cps

TO1000
Cylinder Adaptor - R12

Includes fibre sealing washer

TO1544
Cylinder Adaptor - R134a

Includes fibre sealing washer



cps

TO1001
1/4" SAE - 1/2" ACME Adaptor

Converts standard 1/4" male flare to 1/2" ACME male
Includes schrader valve



cps

TO1545
Fibre Sealing Washer

Cylinder adaptor washer
Suits TO1000 & TO1544



cps

TO1557
1/2" ACME - 1/4" SAE Adaptor

Converts 1/2" ACME male to standard 1/4" male flare



Jayair
automotive air conditioning parts

TO4003
CPS Ball Valve Tap

1/2" ACME fittings



cps

TO4010
R12 Charging Port Adaptor

1/4" SAE x 1/8" MNPT
Includes schrader valve & dust cap



Jayair
automotive air conditioning parts

TO4015
Gas Thread to 1/4" SAE Adaptor

Includes schrader valve & dust cap



Jayair
automotive air conditioning parts

TO4908
Anti - Siphon Valve Kit

1/4", to suit CPS vacuum pumps



cps



Gauges Parts

TO0380
CPS Ball Valve Tap

1/4" SAE fittings



cps

TO0469
3/16" R12 Charge Hose Adaptor

Suits Toyota & Ford high pressure side



cps

TO1010
1/4" R12 Charge Hose Adaptor

Includes schrader valve



TO1206
CPS Ball Valve Handle

Suits TO4003 & TO0380



cps

TO1539
1/2" ACME Brass Cap



TO1546
Metric - 1/2" ACME Adaptor

Converts Metric M10 x 1.5 to 1/2" Female ACME



TO1556
1/2" ACME - R134a Low Side Service Port Adaptor



TO1563

CPS Nitrogen Leak Test Kit

Nitrogen test manifold with 0-200 psi gauge and hoses

Technical Specifications

- 6' red service hose with R134a high side coupler
- 25' coiled air hose
- Includes regulator with female fitting



TO0780

CPS LS780B Leak Detector

Detects all CFC, HCFC & HFC refrigerants

Technical Specifications

- Sensitivity to 10gm/year
- Simple operation with Hi/Lo sensitivity settings
- Single hand operation with 18" metal probe
- Visible and Audible alarm
- 40hr battery life (Alkaline)



TO0790

CPS LS790B Leak Detector

Detects all CFC, HCFC & HFC refrigerants

Technical Specifications

- Sensitivity to 10gm/year
- Patented Ion pump for fast response time
- Patented selective filter housing eliminates false alarms
- Improved power, filtering & sensitivity circuits
- Lock out feature pinpoints leak source
- Patented water vapour filter



TO3282

CPS LS1 Leak Detector

Suitable for detecting HFO-1234yf and all CFC, HCFC & HFC refrigerants

Technical Specifications

- Sensitivity to 3gm/year
- E_MOS Detection Technology
- 500hr sensor life
- Highly resistant to background contaminants
- Two audible alarms
- 50hr battery life (Alkaline)



TO3287

CPS LDA1000 Leak Detector

Suitable for detecting HFO-1234yf and all CFC, HCFC & HFC refrigerants

Technical Specifications

- Sensitivity to 3gm/year
- E_MOS Detection Technology
- 500hr sensor life
- Highly resistant to background contaminants
- Two audible alarms
- Cold cathode diode sensor technology
- 50hr battery life (Alkaline)



TO3216

CPS LS3000 Eliminator Leak Detector

Detects all CFC, HCFC & HFC refrigerants

Technical Specifications

- Sensitivity to 3gm/year
- Highly resistant to background contaminants
- Two audible alarms
- Cold cathode diode sensor technology
- 75hr battery life (Alkaline)



TO9804

Robinair RX-1A Leak Detector

Detects all CFC, HCFC & HFC refrigerants

Technical Specifications

Sensitivity to 7gm/year
 Visual Leak Indication Levels: 6 (single colour)
 Sensitivity Levels: 2
 One touch Reset
 Battery life approx. 30hrs



TO9812

Robinair XP-1A Leak Detector

Detects all CFC, HCFC & HFC refrigerants

Technical Specifications

Sensitivity to 3gm/year
 Visual Leak Indication Levels: 18 (tri-colour)
 Sensitivity Levels: 7
 One touch Reset
 Battery life approx. 30hrs



TO5300

Mastercool Inspector - UV Blue Light Leak Detector

Electronic & UV can be used simultaneously

Technical Specifications

Sensitivity to 3gm/year
 6 sensitivity levels & 15 levels of detection
 Restart function
 Battery test
 UV dye injector
 120ml dye cleaner



TO0783

Ion Pump Sensor

Suits TO0780 & TO0790



TO3218

Selective Filter Housing

Suits TO0780 & TO0790



TO1301

Tracermax UV Blue LED Lamp

12V, 50W Globe
 4.3m Lead



TO8640

Optimax Jr. Fluoro Lamp

75W Globe
Requires 3 AAA Batteries

UV Safety Glasses: TO9945



TO8681

Optimax 3000 LED Fluoro Torch

Rechargeable NiCAD
15 times brighter than a standard lamp

Charger to suit: TO8696
LED Bulb: TO8683



TO8034

Universal Fluoro Dye

Ideal for R134a &
HFO-1234yf systems.
237ml



TO8030

Dye Injector

Suits R12 & R134a



TO8621

UV Leak Detection Kit

Dye suitable for R134a & HFO-1234yf
systems. Contains cordless torch
and UV dyes



TO0033

CPS Mini UV LED Inspection Lamp

Ultra compact at 65mm long
Clip attachment provided suits any 1/4" - 3/8" shaft
Requires 3 x AG13 or LR44 batteries (included)



TO3100
Big Blu 985ml

Leak detection - Spray pack



TO8697
Fluoro Leak Detection Kit

Dye suitable for R134a & HFO-1234yf systems. HD Tracer for A/C oil, Fuel P/S, Coolant



TO0005
Dye Off 750ml

Concentrated biodegradable cleaner to remove fluoro dye stains.



TO0375
CPS Oil Injector - R12

1/4" SAE fittings
Injects oil straight into the A/C system.



TO4375
CPS Oil Injector - R134a

1/2" ACME fittings
Injects oil straight into the A/C system.



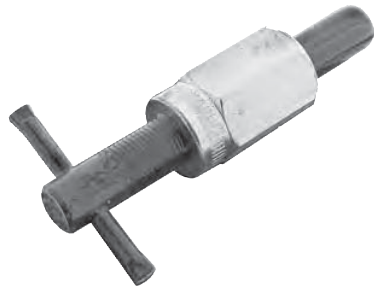
TO9815
Robinair Oil Injector R134a

1/2" ACME fittings
Injects oil straight into the A/C system.



TO0355
Orifice Tube Remover

The orifice tube remover locks onto the orifice tube enabling easy removal. No more pliers and no more broken tubes.



TO0689
O'ring Pick

Removes o'rings from compressor parts & tube fittings. Particularly useful for removal of captive style o'rings and double groove fittings.



TO3541
A/C Hose Cutter



TO0322
Springlock Couplers

Set of 4
Contains
3/8" Tube No 6 removal tool
1/2" Tube No 8 removal tool
5/8" Tube No 10 removal tool
3/4" Tube No 12 removal tool



TO0365
Denso Springlock Tool

Suction



TO0366
Denso Springlock Tool

Liquid



TO4108
Springlock Repair Kit

Suits # 8 springlock fittings



TO4110
Springlock Repair Kit

Suits # 10 springlock fittings





Sundry Parts

TO8710 Denso Springlock Leak Repair Clamp

Suction

TO8730 Denso Springlock Leak Repair Clamp

Liquid



TO0536 Valve Core Remover & Installer

Includes storage of 6 standard valve cores



TO0792 Valve Core Remover & Installer

Suitable for large Eaton R134a valve cores



TO9302 Valve Core Remover & Installer



A32008 Valve Core Installer Torque Tool

Prevents over tightening of valve cores



TO2525 Valve Core Removal Tool Kit

Includes:
Standard valve core extractor
8mm valve core extractor
10mm valve core extractor
GM high flow valve core extractor
JRA valve core extractors
R134a low & high side body
assemblies with side ports
R134a low & high side port adaptor
Carry case & usage chart



TO93FB Flare and Swaging Tool

For double flaring most sizes of alloy tube.
Can also be used to flare some sizes of
copper tube.



TO1475 Hydraulic Flaring Tool Kit

Flares, Push connectors,
GM fuel line flaring,
45 degree double flaring,
Metric bubble flaring
Comes in a handy carry case



TO250T
CPS Tube Bender

Suits: 1/4", 3/8", 1/2", 5/8", 7/8",
6, 10, 12, 16, 19, 22mm.



TO3017
Clutch, Seal & Bearing Tool Set

Suits Zexel, Hitachi, Hitachi, Mitsubishi,
Denso, Seiko-Seiki and
Sanden 505, 508, 510,
575, 708 & 709.



TO3019
**Deluxe Clutch Hub Puller/Installer &
Orifice Tube Service Kit**

Suits GM, Ford, Chrysler & Imports



TO0337
Hub Remover

Denso clutch
Removes the front hub (plate) from the
compressor



TO0338
Compressor Clutch Tool Kit

Denso clutch
Installs the front hub (plate) on the
compressor



TO1384
**Sanden SD Series Clutch Hub
Remover**

Removes the front hub (plate)
from the compressor



TO1458
GM A6 & R4 Clutch Hub Installer



TO3776
GM V5 Clutch Plate Remover





TO3371
Atco Bubble Crimper

The kit comes with a complete set of dies for #6 to #12 barrier and reduced barrier hose
Engineered specifically for use with Atco beadlock fittings
Quick change dies - no tools required to change die sizes
Performs an OE style triple bubble crimp
Portable, hand operation
This kit comes in a custom moulded case



TO3762
Mastercool Hydraulic "Hydra-Krimp" Crimper

The "Hydra-Krimp" makes crimping barbed and beaded fittings very easy.

The kit comes with a complete set of dies for #6 to #12 barrier and reduced barrier hose
This unit is portable and ideal for workshop and field operations
The dies snap quickly into the press fixture requiring no pins or screws



TO1500
Jayair Hydraulic Crimper

This Crimper makes crimping barbed and beaded fittings very easy.

The kit comes with a complete set of dies for #6 to #12 barrier and reduced barrier hose.
This unit is portable and ideal for workshop and field operations
The dies snap quickly into the press fixture requiring no pins or screws



TO7150
Hydraulic Crimper Pump

Suits: TO1500 & TO3762



TO3723
Hydraulic Crimper Repair Kit

Suits: TO1500 & TO3762



TO3725
Hydraulic Crimper Oil Reservoir

Suits: TO1500 & TO3762



TO3726
Hydraulic Crimper Head Assembly

Suits: TO1500 & TO3762



TO3724
Hydraulic Crimper Shaft Assembly

Suits: TO1500 & TO3762



TO3727
Hydraulic Crimper Pin

Suits: TO1500 & TO3762



TO3816**Electronic Control Valve Tester**

Ideal for testing electronic control valves on late model compressors.

Enables the testing of the compressor without removing it from the vehicle
Supplied with a special simulator to protect the vehicles electronics

**TO1113****Ford HVAC Diagnostic Scan Tool**

Heating, ventilation and air conditioning (HVAC) Scan Tool for Ford is designed to help mechanics, A/C specialists and technicians in locating and solving problems related to HVAC system for Ford BA, BF, FG and Territory models built in Australia from 2003 onwards.

This Diagnostic Scan Tool enables the operator to:
Configure the HVAC Interface Module for all Ford variants.
Viewing and clearing of HVAC Diagnostic Trouble Codes (DTC's).
Test every actuator and sensor in minutes
Execute the learn procedure for all actuators
Test fan at different speeds on all models

**TO1114****Holden HVAC Diagnostic Scan Tool**

Heating, ventilation and air conditioning (HVAC) Scan Tool for Holden VE is designed to assist mechanics, A/C specialists and technicians in locating and solving problems related to HVAC system for all Holden VE and WM models. The HVAC Tester is a fully featured OBDII diagnostic tool, which allows the user to execute different diagnostic commands to test every component within the HVAC system in real time via the vehicle OBDII diagnostic data port.

This Diagnostic Scan Tool enables the operator to:
Run electronically controlled, clutchless air-conditioning compressor at 100%.
Check Compressor Coil and Compressor Pressure current values
Configure the Electronics Control Module for all Holden VE variants
Execute the learn procedure for all actuators.
Viewing and clearing of HVAC Diagnostic Trouble Codes (DTC's) which are current or stored in history.
Test every actuator and sensor.
Test fan at different speeds on all models.



TO0250

Thermo Psychrometer

The HVAC Tester is a fully featured OBDII diagnostic tool. It allows the user to execute different diagnostic commands to test every component in HVAC system in real time via the vehicle OBDII diagnostic port.

Features

- Min/Max memory
- 4 temp measurements (2 air, 2 surface)
- Includes 2 general purpose air probes, 2 gator jacks for condenser
- Comprehensive automatic troubleshooting manual

Additional Probes

- Thermo probe:** TO0179
- Puncture probe:** TO0181
- Clamp on Probe 4.5m:** TO0204
- Surface Probe 4.5m:** TO0205
- Air Temp Probe 4.5m:** TO0206
- Air Temp Probe 7.62m:** TO0207
- Air Temp Probe 15.24m:** TO0208
- General Purpose Probe 10m:** TO0210



TO6002

Digital Multimeter & Automotive Engine Analyser

The HVAC Tester is the most feature rich, easy to use and powerful diagnostics package available on the market today

Features

- Auto Range
- Automatic negative polarity indication
- Automatic zero adjustment
- Low battery display and auto power off



TO0027

Digital Clamp On Voltage Tester

Technical Specifications

- 1000amp AC/DC Digital
- Auto/Manual range
- Backlight function, Jaw lighting
- Data hold function
- MAX/MIN function
- True RMS for AC voltage and current
- Display 3999 counts and 42 segments bar graph
- Double insulation
- Auto zero key for DCA
- Continuity test, Diode test
- True RMS for AC voltage and current
- DCV• 4/40/400V±0.8%, 1000V±1.0%
- ACV• 4/40/400V±1.0%, 700V±1.2%
- DCA• 400/1000A±3.0%
- ACA• 400/1000A<600A±2.5%, ≥600A±3.0%
- Resistance• 400/4k/40k/400k/4M_±1.0%, 40M_±2.0%



TO6003

CPS Air Velocity Meter

Measures air velocity and temperature, air flow measured in ft/min, m/s, km/h.

Features

- Data hold function
- Thermocoupler sensor for temperature measurement (0-50 degrees)



TO0040
OTC Digital Multimeter

This Multimeter provides a full feature set at an economical price. The TO0040 contains all the base functions required for today's automotive testing.

- Features**
Auto / Manual Range
Continuity Test
Data Hold
Max Hold
Auto Power Off



TO0041
OTC Digital Multimeter

This Multimeter features powerful automotive test functions such as; Frequency, Duty Cycle, Diode & Continuity Tests, plus all the standard meter features you expect in a professional grade Multimeter

- Features**
Diode Check
Continuity Test
Auto Range
Data Hold
Relative Change
Auto Power Off



TO0042
OTC Digital Multimeter (Hybrid Vehicle compatible)

This Multimeter includes powerful automotive test functions such as; Frequency, Duty Cycle, Diode & Continuity Tests, PLUS Automotive specific tests; True RMS, RPM, Dwell, Pulse Width, Temperature, Backlight, RS232, and Min/Max. It is CATIII so it is compatible Hybrid vehicle systems

- Features**
Cat III 1000V
Continuity Test
Auto Range, Data Hold,
Relative Change Backlight,
Auto Power Off
Min / Max, RS232 & Cable,
Red & Black Test Leads,
Alligator Clips,
RPM Pickup Adaptor,
Temp Probe Adaptor,
PC Cable &
Software,
Black Canvas
Case



TO0044
OTC Digital Multimeter (Hybrid Vehicle compatible)

OTC 1000V CAT III Hybrid Multimeter with Insulation Test. A full function Multimeter with an insulation test feature is used to test for voltage leaks through insulation found on Hybrid and Electric Vehicles.

- Features**
Cat III 1000V
Data Logging
Continuity Test
Auto Range,
Data Hold,
Relative Change
Backlight,
Auto Power Off
Min / Max,
RS232 & Cable,
Red & Black Test
Leads, Alligator Clips,
RPM Pickup Adaptor,
Temp Probe Adaptor,
PC Cable & Software,
Black Canvas Case



TO5017
CPS Infrared Thermometer

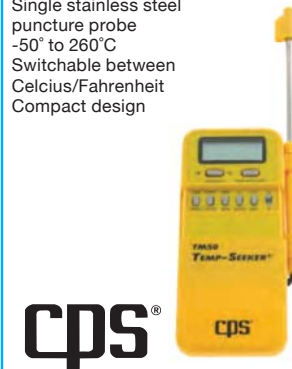
The professional's choice for an accurate, reliable and rugged portable infrared laser thermometer.

- Features**
Temp range: -60°C to 500°C
Accuracy 2%.
Built in infrared laser with LED flashlight.
Switchable Celcius/Fahrenheit.
LCD backlight display.
Auto data hold when
trigger is released.



TO2021
Digital Thermometer

- Features**
Selectable temp set
points with alarm
Single stainless steel
puncture probe
-50° to 260°C
Switchable between
Celcius/Fahrenheit
Compact design



TO9266
Digital Thermometer

Convenient small thermometer with a digital read out.



G6000

Bullant Inspection Camera 2.4" TFT-LCD Screen

Suitable for Surveillance, Air Conditioning Inspection, Automotive inspection, Plumbing inspection and for general hard to reach inspections

Features

- 9mm Camera head
- Waterproof Capacity IP67
- Minimum Illumination 0 Lux
- Video System PAL
- Power Supply 4 x AA batteries (not Included)



G8000

Bullant Inspection Camera 2.7" TFT-LCD Screen

Suitable for Surveillance, Air Conditioning Inspection, Automotive inspection, Plumbing inspection and for general hard to reach inspections.

Features

- Record and Zoom Function
- 9mm Camera head
- Waterproof Capacity IP67
- Minimum Illumination 0 Lux
- Video System PAL / NTSC
- Micro SD card (not included)
- Power Supply 4 x AA batteries (not Included)



G9000

Bullant Inspection Camera 2.5" Detachable TFT-LCD Screen Wired or Wireless

Suitable for Surveillance, Air Conditioning Inspection, Automotive inspection, Plumbing inspection and for general hard to reach inspections.

Features

- 9mm Camera head
- Waterproof Capacity IP67
- Minimum Illumination 0 Lux
- Video System PAL
- Power Supply 4 x AA batteries (not Included)



G9500HC

Bullant Inspection Camera 3.5" Detachable TFT-LCD Screen Wired or Wireless

Suitable for Surveillance, Air Conditioning Inspection, Automotive inspection, Plumbing inspection and for general hard to reach inspections.

Features

- Record and Zoom Function
- 9mm Camera head
- Waterproof Capacity IP67
- Minimum Illumination 0 Lux
- Video System PAL / NTSC
- Micro SD card (not included)
- Power Supply Rechargeable Li Battery



TO0032

Rechargeable Anodized Aluminium LED Work Light

Features

- Rugged Anodized Aluminum Body
- Super Bright 1w Luxeon Spot
- 53 Proprietary High Lumen Output LED's
- Integrated 2500mAh 3.5v Rechargeable Battery
- Strong Magnetic Base
- Universal UL/CUL Electronic Wall and Car Chargers included
- Superior Durability and Shock Resistance
- High Quality Reflector Lens
- 1 year Warranty

