

Heater Cores & Heater Taps

Heater Cores			Nissan	»	281
Alfa Romeo	»	262	Electric	»	282
Audi	»	262	Cable	»	282
BMW	»	262			
Citroen	»	263	Application Guide	»	282
Daewoo	»	264			
Ford	»	264			
Holden	»	268			
Hyundai	»	269			
Lexus	»	270			
Mazda	»	270			
Mercedes Benz	»	271			
Mitsubishi	»	271			
Nissan	»	272			
Peugeot	»	273			
Range Rover	»	274			
Renault	»	274			
Saab	»	274			
Seat	»	274			
Skoda	»	275			
Toyota	»	275			
Volkswagen	»	279			
Volvo	»	280			
Heater Taps					
Ford	»	281			
Holden	»	281			
Mitsubishi	»	281			

HC0141

Alfa Romeo

33 85 - 92
OE # 60504449, 532125



Core
H -157 W -166 TH -42
Header Top
L -155 TH -52
Header Bottom
L -155 TH -52

Material
Alloy/Plastic

HC0140

Alfa Romeo

164 87 - 98
OE # 60805074



Core
H -280 W -156 TH -48
Header Top
L -156 TH -55
Header Bottom
L -156 TH -55

Material
Alloy/Plastic

HC0057

Audi

A3 9/96 - 7/98
OE # 1H2819031B



Core
H -235 W -155 TH -40
Header Top
L -155 TH -48
Header Bottom
L -155 TH -48

Material
Alloy/Plastic

HC0100

Audi

A4 11/94 - 00
OE # 802819030, 802819031A



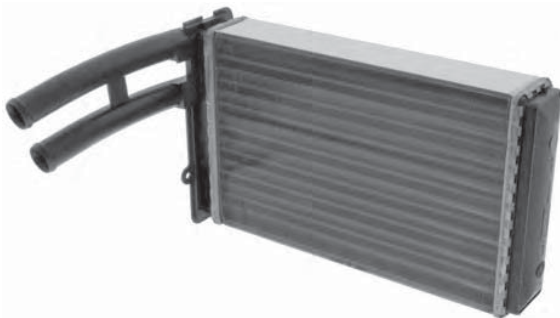
Core
H -234 W -158 TH -42
Header Top
L -160 TH -50
Header Bottom
L -155 TH -49

Material
Alloy/Plastic

HC0142

Audi

80 2.0, 2.3, 2.6, 2.8Lt 92 - 00
OE # 894819031A



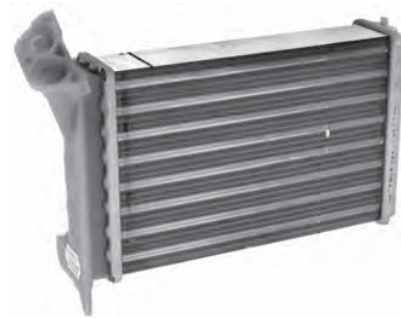
Core
H -234 W -156 TH -42
Header Top
L -160 TH -50
Header Bottom
L -160 TH -50

Material
Alloy/Plastic

HC0062

BMW

E30 3 Series 10/82 - 91
OE # 64118391363



Core
H -223 W -150 TH -45
Header Top
L -160 TH -60
Header Bottom
L -160 TH -60

Material
Alloy/Plastic

HC0143

BMW

E34 5 Series 93 - 95
OE # 64111384725



Core
H -184 W -276 TH -42
Header Top
L -276 TH -50
Header Bottom
L -276 TH -50

Material
Alloy/Plastic

HC0058

Citroen

Berlingo 07/96>
OE # 644880



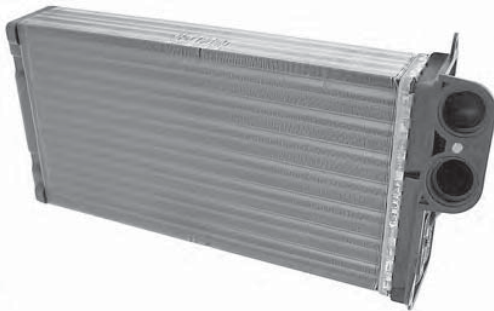
Core
H -283 W -155 TH -40
Header Top
L -155 TH -48
Header Bottom
L -155 TH -48

Material
Alloy/Plastic

HC0069

Citroen

C2 09/03>
OE # 6448K9



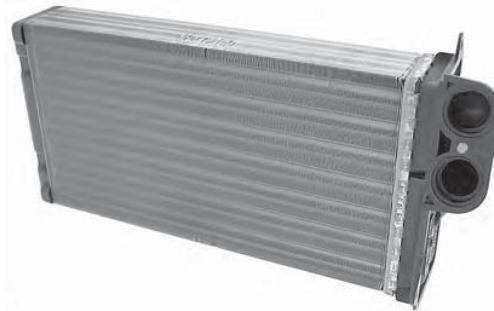
Core
H -250 W -139 TH -42
Header Top
L -140 TH -50
Header Bottom
L -139 TH -49

Material
Alloy/Plastic

HC0069

Citroen

C3 04/02>
OE # 6448K9



Core
H -250 W -139 TH -42
Header Top
L -140 TH -50
Header Bottom
L -139 TH -49

Material
Alloy/Plastic

HC0058

Citroen

Xantia 03/93 - 05/02
OE # 644880



Core
H -283 W -155 TH -40
Header Top
L -155 TH -48
Header Bottom
L -155 TH -48

Material
Alloy/Plastic

HC0058

Citroen

Xsara 07/97>
OE # 644880



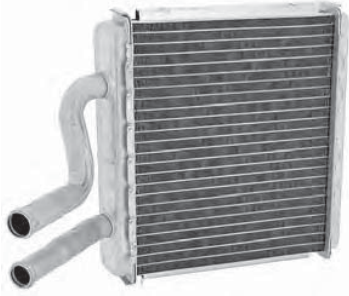
Core
H -283 W -155 TH -40
Header Top
L -155 TH -48
Header Bottom
L -155 TH -48

Material
Alloy/Plastic

HC0070

Daewoo

Lanos 95 - 97
OE # 96331063



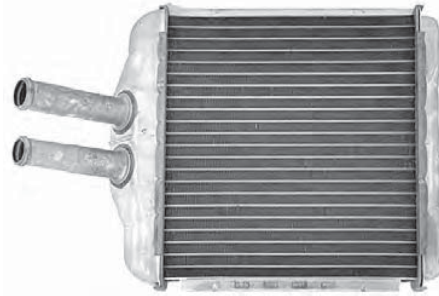
Core
H -167 W -215 TH -24
Header Top
L -210 TH -40
Header Bottom
L -210 TH -40

Material
Alloy

HC0075

Daewoo

Leganza
OE # 96207413, 97190674



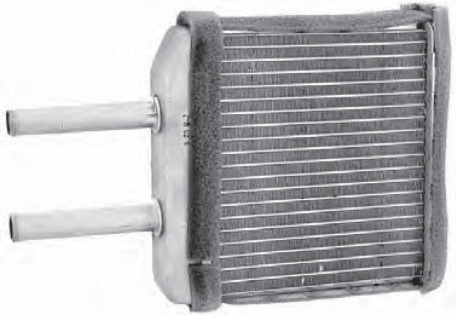
Core
H -167 W -200 TH -24
Header Top
L -193 TH -40
Header Bottom
L -193 TH -40

Material
Alloy

HC0074

Daewoo

Matiz
OE # 96314858



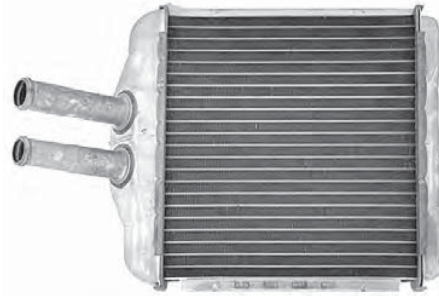
Core
H -150 W -180 TH -24
Header Top
L -180 TH -40
Header Bottom
L -180 TH -40

Material
Alloy

HC0075

Daewoo

Nubira I & II 06/97 - 11/03
OE # 96190674



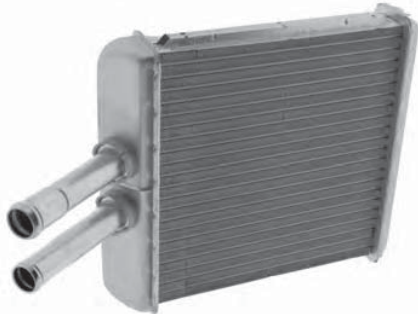
Core
H -167 W -200 TH -24
Header Top
L -193 TH -40
Header Bottom
L -193 TH -40

Material
Alloy

HC0161

Daewoo

Cielo 1.5Lt 11/95 - 4/98
OE # 96231949



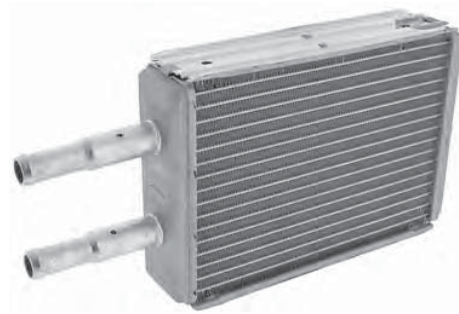
Core
H -160 W -185 TH -23
Header Top
L -185 TH -32
Header Bottom
L -185 TH -32

Material
Alloy

HC0067

Ford

Escape



Core
H -145 W -194 TH -45
Header Top
L -197 TH -50
Header Bottom
L -194 TH -50

Material
Copper/Brass

HC0080

Ford

Falcon BA 02>
OE # BA18B539A



Core
H -250 W -128 TH -36
Header Top
L -137 TH -44
Header Bottom
L -137 TH -44

Material
Alloy

HC0014

Ford

Falcon EA-AU Sedan, Falcon XG, AU Ute, Fairlane
88 - 02 OE # EC18B539A



Core
H -140 W -160 TH -47
Header Top
L -160 TH -58
Header Bottom
L -160 TH -58

Material
Copper/Brass

HC0003

Ford

Falcon XF, Fairlane ZL >88
OE # XF18B539A



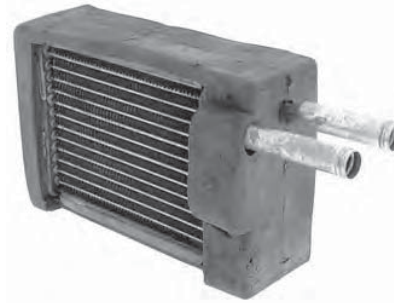
Core
H -140 W -160 TH -47
Header Top
L -160 TH -58
Header Bottom
L -160 TH -58

Material
Copper/Brass

HC0022

Ford

Falcon XE 1/83>
OE # F18B539A



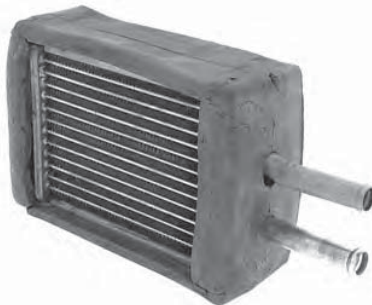
Core
H -148 W -130 TH -48
Header Top
L -120 TH -60
Header Bottom
L -120 TH -60

Material
Copper/Brass

HC0012

Ford

Falcon XD, XE >1/83
OE # XD18B359A



Core
H -147 W -130 TH -48
Header Top
L -123 TH -58
Header Bottom
L -123 TH -58

Material
Copper/Brass

HC0017

Ford

Falcon XA-XC without A/C
OE # XC18476A



Core
H -147 W -130 TH -48
Header Top
L -122 TH -60
Header Bottom
L -122 TH -60

Material
Copper/Brass

HC0081

Ford

Festiva 94 - 01



Core
 H -140 W -145 TH -30
Header Top
 L -145 TH -44
Header Bottom
 L -145 TH -44

Material
 Copper/Brass

HC0066

Ford

Ka 12/99>
 OE # 96FW18B539AD



Core
 H -243 W -208 TH -27
Header Top
 L -203 TH -27
Header Bottom
 L -203 TH -27

Material
 Alloy

HC0023

Ford

Laser KF, KH >1/93
 OE # AB45561A10AA



Core
 H -145 W -180 TH -47
Header Top
 L -180 TH -58
Header Bottom
 L -180 TH -58

Material
 Copper/Brass

HC0024

Ford

Laser KC, KE 11/85>
 OE # AB09261A10AA



Core
 H -140 W -167 TH -32
Header Top
 L -160 TH -45
Header Bottom
 L -160 TH -45

Material
 Copper/Brass

HC0026

Ford

Laser KC Wagon, Laser KC, KE 4 Door
 OE # B09261A10



Core
 H -143 W -158 TH -48
Header Top
 L -158 TH -60
Header Bottom
 L -158 TH -60

Material
 Copper/Brass

HC0026

Ford

Laser KC Hatch >11/85
 OE # B09261A10



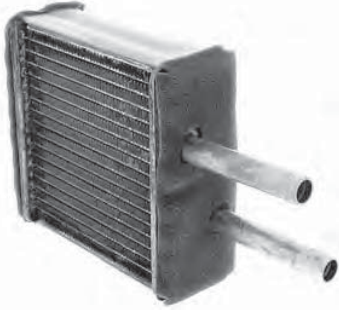
Core
 H -143 W -158 TH -48
Header Top
 L -158 TH -60
Header Bottom
 L -158 TH -60

Material
 Copper/Brass

HC0018

Ford

Laser KA, KB
OE # B001-76405



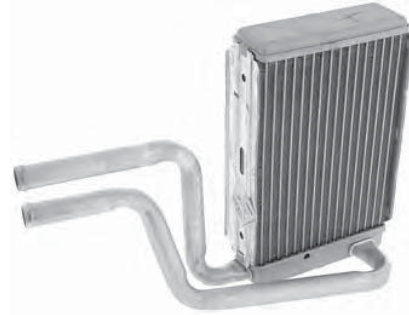
Core
H -140 W -160 TH -48
Header Top
L -160 TH -60
Header Bottom
L -160 TH -60

Material
Copper/Brass

HC0068

Ford

Mondeo 95 - 99
OE # 93BW 18476AC



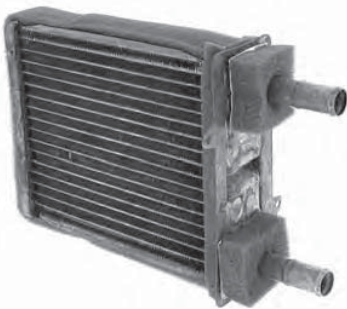
Core
H -193 W -150 TH -50
Header Top
L -143 TH -48
Header Bottom
L -143 TH -48

Material
Alloy

HC0028

Ford

Telstar AT



Core
H -175 W -165 TH -32
Header Top
L -160 TH -40
Header Bottom
L -160 TH -40

Material
Copper/Brass

HC0080

Ford

Territory 5/04>
OE # BA 18B539A



Core
H -250 W -128 TH -36
Header Top
L -137 TH -44
Header Bottom
L -137 TH -44

Material
Alloy

HC0163

Ford

Transit 2.5Lt Diesel with A/C 4/94 - 4/96
OE # 4166487



Core
H -247 W -146 TH -48
Header Top
L -150 TH -55
Header Bottom
L -150 TH -55

Material
Copper/Brass

HC0162

Ford

Transit 2.5Lt Diesel without A/C 4/94 - 4/96
OE # 4042575



Core
H -247 W -146 TH -42
Header Top
L -150 TH -50
Header Bottom
L -150 TH -50

Material
Copper/Brass

HC2720

Holden

Commodore VE
OE # 92192307

Core
H -295 W -135 TH -25
Header Top
L -135 TH -30
Header Bottom
L -135 TH -30

Material
Alloy

HC0089

Holden

Commodore VT - VZ, VU Ute, Statesman WH, WK
OE # 92206366

Core
H -200 W -169 TH -35
Header Top
L -169 TH -45
Header Bottom
L -169 TH -45

Material
Alloy

HC0025

Holden

Commodore VN-VS, VG Ute, Statesman & Caprice VQ
OE # VS18009

Core
H -201 W -148 TH -32
Header Top
L -140 TH -42
Header Bottom
L -140 TH -42

Material
Copper/Brass

HC0005

Holden

Commodore VK, some early VL
OE # VS16879

Core
H -170 W -145 TH -32
Header Top
L -142 TH -42
Header Bottom
L -142 TH -42

Material
Copper/Brass

HC0001

Holden

Commodore VB-VH
OE # 92000147

Core
H -240 W -147 TH -32
Header Top
L -140 TH -40
Header Bottom
L -140 TH -40

Material
Copper/Brass

HC0016

Holden

Commodore VB-VH with Harrison A/C
OE # 3037391

Core
H -200 W -145 TH -32
Header Top
L -140 TH -43
Header Bottom
L -140 TH -43

Material
Copper/Brass

HC0091

Holden

Jackaroo 94>
OE # 8943 2864 02



Core
H -160 W -160 TH -45
Header Top
L -165 TH -55
Header Bottom
L -168 TH -55

Material
Alloy/Plastic

HC0002

Holden

Kingswood HQ, HX, HZ without genuine A/C
OE # 9939196



Core
H -200 W -147 TH -32
Header Top
L -142 TH -40
Header Bottom
L -142 TH -40

Material
Copper/Brass

HC0091

Holden

Rodeo 94>
OE # 8943 2864 02



Core
H -160 W -160 TH -45
Header Top
L -165 TH -55
Header Bottom
L -168 TH -55

Material
Alloy/Plastic

HC0060

Holden

Vectra 10/95 - 06/03



Core
H -215 W -180 TH -40
Header Top
L -180 TH -52

Material
Alloy/Plastic

HC0144

Holden

Barina XC 1.8Lt Z18XE 4/01 - 12/02
OE # 1618222, 9196140



Core
H -171 W -167 TH -42
Header Top
L -168 TH -50
Header Bottom
L -168 TH -50

Material
Alloy

HC0046

Hyundai

Excel, Lantra 9/95>
OE # 97221-22001



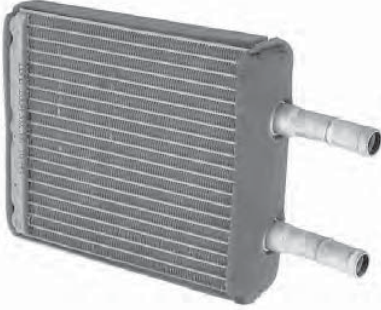
Core
H -165 W -154 TH -40
Header Top
L -145 TH -48
Header Bottom
L -145 TH -48

Material
Alloy

HC0045

Hyundai

Excel, X3 >9/95
OE # 97221-22000



Core
H -170 W -167 TH -26
Header Top
L -167 TH -40
Header Bottom
L -167 TH -40

Material
Alloy

HC0048

Hyundai

Sonata 6/95>
OE # 97123-33901



Core
H -195 W -150 TH -42
Header Top
L -145 TH -50
Header Bottom
L -145 TH -50

Material
Alloy

HC0106

Lexus

LX570 04/08>
OE # 87107-38300



Core
H -165 W -200 TH -20

Material
Alloy

HC0130

Lexus

RX450H 96/09>
OE # 87107-33120



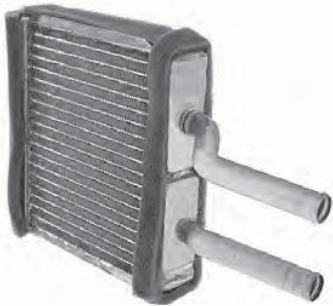
Core
H -130 W -210 TH -26

Material
Alloy

HC0039

Mazda

121 DB 90 - 93



Core
H -145 W -185 TH -28
Header Top
L -185 TH -40
Header Bottom
L -185 TH -40

Material
Copper/Brass

HC0090

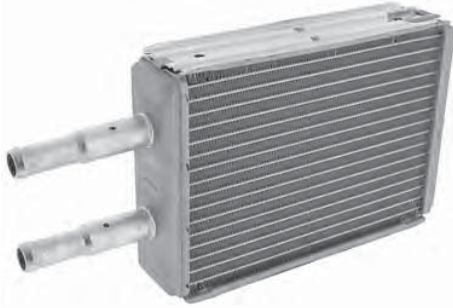
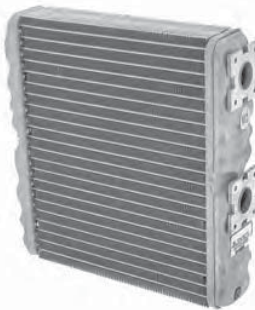
Mazda

RX8 03>
OE # F15161A10



Core
H -95 W -281 TH -21
Header Top
L -182 TH -26
Header Bottom
L -182 TH -26

Material
Alloy

HC0067**Mazda****Tribute 12/00>**
OE # EC01-61-A08**Core**
H -145 W -194 TH -45
Header Top
L -197 TH -50
Header Bottom
L -194 TH -50**Material**
Cooper/Brass**HC0148****Mercedes Benz****W126 S Class 86 - 92**
OE # 0028353101**Core**
H -210 W -216 TH -50
Header Top
L -216 TH -55
Header Bottom
L -216 TH -55**Material**
Alloy/Plastic**HC0148****Mercedes Benz****W129 500SL 5/92 - 6/98**
OE # 0028353101**Core**
H -210 W -216 TH -50
Header Top
L -216 TH -55
Header Bottom
L -216 TH -55**Material**
Alloy/Plastic**HC0146****Mercedes Benz****W210 E Class 94 - 02**
OE # 2208300261**Core**
H -239 W -189 TH -40
Header Top
L -196 TH -46
Header Bottom
L -190 TH -46**Material**
Alloy**HC0050****Mitsubishi****Magna TE, TF, TH, TJ Verada KE, KF, KH, KJ**
2/96 - 06/03 OE # AW 349219**Core**
H -153 W -195 TH -35
Header Top
L -193 TH -43
Header Bottom
L -193 TH -43**Material**
Alloy
O'rings
OR9220 x 2**HA7007****Outlet Pipes Suit HC0050****O'rings**
OR9220 x 2

OR9220

O'ring/Seal Suit HC0050



HC0059

Mitsubishi

Magna TR, TS & Verada KR, KS 4/91 - 3/96



Core
H -204 W -167 TH -32
Header Top
L -160 TH -42
Header Bottom
L -160 TH -42

Material
Copper/Brass

HC0007

Mitsubishi

Magna TM, TN, TP 7/85 - 7/89
OE # AW308788



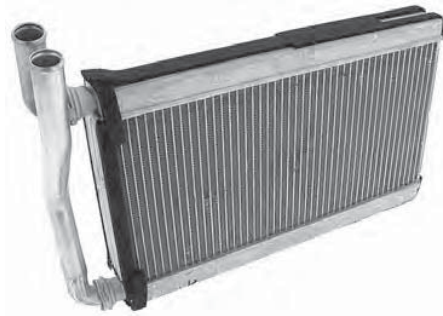
Core
H -185 W -163 TH -30
Header Top
L -160 TH -40
Header Bottom
L -160 TH -40

Material
Copper/Brass

HC0079

Mitsubishi

Pajero NM, NP 2/00>
OE # MR500659



Core
H -170 W -280 TH -26
Header Top
L TH
Header Bottom
TH

Material
Alloy

HC0006

Mitsubishi

Sigma GJ, GK
OE # 4255818



Core
H -183 W -140 TH -48
Header Top
L -140 TH -58
Header Bottom
L -140 TH -58

Material
Copper/Brass

HC0027

Nissan

Bluebird Series 3 2/85>
OE # 27115-V9675



Core
H -160 W -160 TH -50
Header Top
L -160 TH -58
Header Bottom
L -160 TH -58

Material
Copper/Brass

HC0009

Nissan

Bluebird 910 Series 1 & 2 >1/85
OE # 27115-V9625



Core
H -160 W -160 TH -50
Header Top
L -160 TH -60
Header Bottom
L -160 TH -60

Material
Copper/Brass

HC0165

Nissan

Micra K11 07/95 - 3/98
OE # 2714098B10



Picture unavailable at time of printing

Core
H -154 W -185 TH -43
Header Top
L -185 TH -45
Header Bottom
L -185 TH -45

Material
Alloy

HC0040

Nissan

Pintara, Skyline 6 Cyl 87 - 92



Core
H -170 W -152 TH -32
Header Top
L -143 TH -44
Header Bottom
L -143 TH -44

Material
Copper/Brass

HC0058

Peugeot

306 02/93 - 09/02
OE # 644880



Core
H -283 W -155 TH -40
Header Top
L -155 TH -48
Header Bottom
L -155 TH -48

Material
Alloy/Plastic

HC0151

Peugeot

505 9/87 - 89
OE # 644854



Core
H -250 W -156 TH -42
Header Top
L -160 TH -46
Header Bottom
L -160 TH -46

Material
Alloy/Plastic

HC0149

Peugeot

205 83 - 97
OE # 644851, 6448G2



Core
H -234 W -138 TH -42
Header Top
L -140 TH -46
Header Bottom
L -140 TH -46

Material
Alloy/Plastic

HC0149

Peugeot

309 10/85 - 4/89
OE # 644851, 6448G2



Core
H -234 W -138 TH -42
Header Top
L -140 TH -46
Header Bottom
L -140 TH -46

Material
Alloy/Plastic

HC0029

Range Rover

Range Rover 72 - 88
OE # R606923



Core
H -267 W -140 TH -48
Header Top
L -143 TH -58
Header Bottom
L -143 TH -58

Material
Copper/Brass

HC0154

Renault

Clio Series 1 & 2 5/01 - 7/06
OE # 7701044790, 7701045552



Core
H -234 W -157 TH -45
Header Top
L -160 TH -50
Header Bottom
L -160 TH -50

Material
Alloy/Plastic

HC0099

Saab

9000 2.0Lt Hatchback & Turbo 85 - 93
OE # 4613881



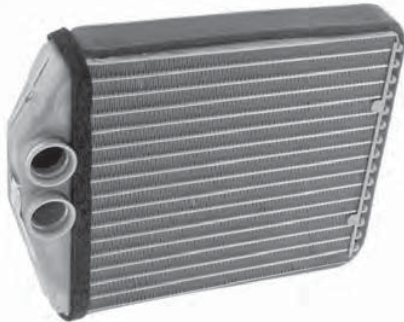
Picture unavailable at time of printing

Core
H -280 W -157 TH -33

HC0155

Saab

9-3 2.0Lt 06/98 - 02/01
OE # 93171801



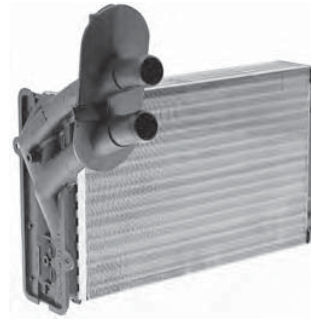
Core
H -185 W -169 TH -35

Material
Alloy

HC0057

Seat

Cordoba 09/93 - 08/02
OE # 1H2819031A



Core
H -235 W -155 TH -40
Header Top
L -155 TH -48
Header Bottom
L -155 TH -48

Material
Alloy/Plastic

HC0057

Seat

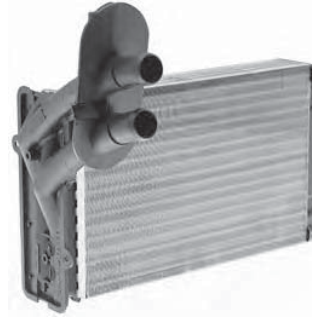
Ibiza 02/93 - 11/01
OE # 1H2819031A

Core
H -235 W -155 TH -40
Header Top
L -155 TH -48
Header Bottom
L -155 TH -48

Material
Alloy/Plastic

HC0057

Seat

Toledo 02/91 - 10/98
OE # 1H2819031A

Core
H -235 W -155 TH -40
Header Top
L -155 TH -48
Header Bottom
L -155 TH -48

Material
Alloy/Plastic

HC0057

Skoda

Octavia 10/96 - 08/98
OE # 1H2819031B

Core
H -235 W -155 TH -40
Header Top
L -155 TH -48
Header Bottom
L -155 TH -48

Material
Alloy/Plastic

HC0130

Toyota

Aurion GSV40 06>
OE # 87107-33120

Core
H -130 W -210 TH -26

Material
Alloy

HC0063

Toyota

Avalon MCX10R 00>
OE # 87107-YC020

Core
H -220 W -163 TH -27
Header Top
L -163 TH -37
Header Bottom
L -163 TH -37

Material
Alloy

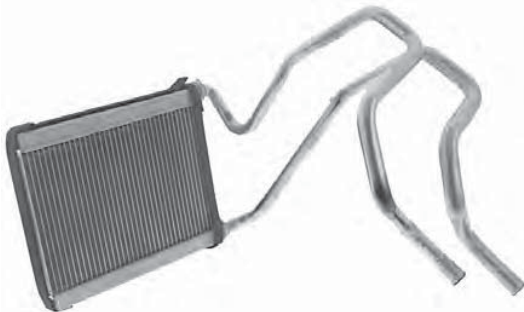
HC0082

Toyota

Avenis ACM20R, ACM21R 12/01>
OE # 87107-44010

Core
H -180 W -187 TH -27
Header Top
L -187 TH -38
Header Bottom
L -187 TH -38

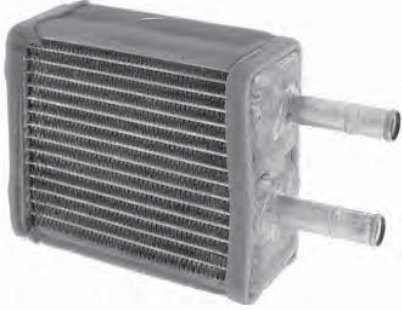
Material
Alloy

HC0130**Toyota****Camry ACV40 06>**
OE # 87107-33120**Core**
H -130 W -210 TH -26**Material**
Alloy**HC0063****Toyota****Camry MCV20, SXV20 97>**
OE # 87107-YC020**Core**
H -220 W -163 TH -27
Header Top
L -163 TH -37
Header Bottom
L -163 TH -37**Material**
Alloy**HC0034****Toyota****Camry SDV10 Wide body 11/92 - 7/97**
OE # 87107-33010**Core**
H -220 W -162 TH -32
Header Top
L -160 TH -40
Header Bottom
L -160 TH -40**Material**
Copper/Brass**HC0010****Toyota****Camry SV20, 21, 22**
OE # 87107-YB010**Core**
H -220 W -145 TH -32
Header Top
L -140 TH -40
Header Bottom
L -140 TH -40**Material**
Copper/Brass**HC0095****Toyota****Corolla ZZE122R 12/01 - 4/07**
OE # 87107-12550**Core**
H -143 W -220 TH -27
Header Top
L -224 TH -36
Header Bottom
L -224 TH -36**Material**
Alloy**HC0036****Toyota****Corolla AE101, AE102 7/94 - 12/99**
OE # 87107-12380**Core**
H -225 W -140 TH -33
Header Top
L -140 TH -42
Header Bottom
L -140 TH -42**Material**
Copper/Brass

HC0011

Toyota

Corolla AE80, AE82 1/85 - 12/88
OE # 87107-12310A



Core
H -160 W -143 TH -50
Header Top
L -145 TH -60
Header Bottom
L -145 TH -60

Material
Copper/Brass

HC0021

Toyota

Corona ST141
OE # 87107-14110B



Core
H -160 W -160 TH -48
Header Top
L -160 TH -60
Header Bottom
L -160 TH -60

Material
Copper/Brass

HC0093

Toyota

Echo NCP 08/99 - 08/05
OE # 87107-52010



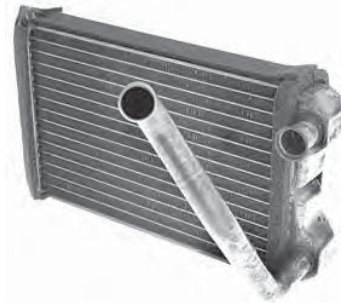
Core
H -134 W -223 TH -27
Header Top
L -224 TH -36
Header Bottom
L -224 TH -36

Material
Alloy

HC0083

Toyota

Hilux 88 - 8/97
OE # 87107-89117



Core
H -221 W -150 TH -32
Header Top
L -142 TH -42
Header Bottom
L -142 TH -42

Material
Copper/Brass

HC0096

Toyota

Kluger MCU28R 11/03 - 07/07
OE # 87107-44040



Core
H -110 W -97 TH -27
Header Top
L -100 TH -38
Header Bottom
L -100 TH -38

Material
Alloy

HC0106

Toyota

Landcruiser 200 Series 11/07>
OE # 87107-38300



Core
H -165 W -220 TH -20

Material
Alloy

HC0087

Toyota

Landcruiser 100 Series
OE # 87107-60290



Core
H -184 W -176 TH -27
Header Top
L -187 TH -36
Header Bottom
L -187 TH -36

Material
Alloy

HC0084

Toyota

Landcruiser 80 Series 96 - 98
OE # 87107-60270



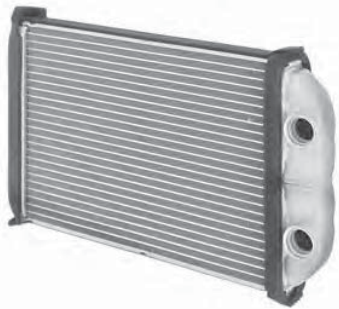
Core
H -200 W -165 TH -36
Header Top
L -162 TH -47
Header Bottom
L -162 TH -47

Material
Alloy

HC0065

Toyota

Prado VZJ95R, RZJ95R 4/96>
OE # 87107-60380



Core
H -220 W -160 TH -26
Header Top
L -155 TH -35
Header Bottom
L -155 TH -35

Material
Alloy

HC0064

Toyota

Rav4 SXA10R, SXA11R 94 - 98
OE # 87107-42060



Core
H -200 W -125 TH -26
Header Top
L -115 TH -35
Header Bottom
L -115 TH -35

Material
Alloy

HC0064

Toyota

Starlet EP91R 1/96 - 8/99
OE # 87107-42060



Core
H -200 W -125 TH -26
Header Top
L -115 TH -35
Header Bottom
L -115 TH -35

Material
Alloy

HC0106

Toyota

Tarago ACR50, GSR50 03/06>
OE # 87107-38300



Core
H -165 W -200 TH -20

Material
Alloy

HC0097

Toyota

Yaris NCP9 05>
OE # 87107-52060



Core
H -170 W -210 TH -26

Material
Alloy

OR3140

Toyota

O'ring Suits Denso alloy heater cores



HC0057

Volkswagen

Caddy 11/95 - 06/03
OE # 1H2819031A



Core
H -235 W -155 TH -40
Header Top
L -155 TH -48
Header Bottom
L -155 TH -48

Material
Alloy/Plastic

HC0057

Volkswagen

Golf I, II, III & IV 04/84 - 10/03
OE # 1H2819031A



Core
H -235 W -155 TH -40
Header Top
L -155 TH -48
Header Bottom
L -155 TH -48

Material
Alloy/Plastic

HC0057

Volkswagen

Passat 04/88 - 05/97
OE # 1H2819031A



Core
H -235 W -155 TH -40
Header Top
L -155 TH -48
Header Bottom
L -155 TH -48

Material
Alloy/Plastic

HC0057

Volkswagen

Polo 10/94 - 09/01
OE # 1H2819031A



Core
H -235 W -155 TH -40
Header Top
L -155 TH -48
Header Bottom
L -155 TH -48

Material
Alloy/Plastic

HC0061

Volkswagen

Transporter 09/90 - 06/03
OE # 701819031A



Core
H -210 W -138 TH -40
Header Top
L -138 TH -48
Header Bottom
L -138 TH -48

Material
Alloy/Plastic

HC0031

Volvo

240
OE # 1215673



Core
H -195 W -195 TH -47
Header Top
L -195 TH -50
Header Bottom
L -195 TH -50

Material
Copper/Brass

HC0105

Volvo

850 91 - 98
OE # 91442210



Core
H -190 W -190 TH -45

Material

HC0106

Volvo

C70 97 - 98
OE # 91442210

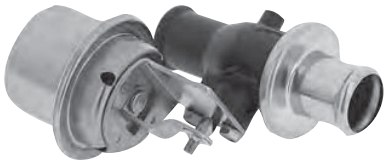


Core
H -165 W -200 TH -20

Material
Alloy

HA5213

Ford Falcon EA-AU
6 cyl



HA6315

Ford Falcon EA-AU
V8



HA5202

Ford Falcon XA, XB, XC Fairlane
ZF, ZH
Without A/C



HA5217

Ford Falcon XD-XF



HA5121

Ford Falcon XW, XY, XR, XT Fairlane
ZA, ZD



HA5218

Holden Commodore VZ
6 cyl



HA5631

Holden Commodore VN-VY



HA5217

Holden Commodore VN-VT



HA7001

Holden Commodore VK, VL



HA5104

Holden HQ-HZ
3 Way. Cable type



HA5105

Holden HQ-HZ
2 Way. Cable type



HA5669

Holden Vectra
OE # 90566947



HA7002

Mitsubishi Colt RB-RE



HA4017

Nissan Bluebird
Series 3



HA7003

Nissan Pulsar AD44, AD46
1986-91



HA5081**Electric 12V
16mm (5/8") Connections****HA5082****Electric 24V
16mm (5/8") Connections****HA4008****Cable operated
5/8" - 5/8" Hose Pull on / Push off****HA9002****Electric 12V (modulating)
5/8" - 5/8" Hose****HA4009****Cable - Heater Tap
Push - Pull**

<i>Make & Model</i>	<i>Engine Type</i>	<i>From</i>	<i>To</i>	<i>CDD #</i>
Commodore VG Ute	V6	89	90	HA5631
Commodore VG Ute	V6	91		HA5217
Commodore VG Ute	V8	8/90		HA5217
Commodore VN	V6	89	90	HA5631
Commodore VN	V6	91	8/91	HA5217
Commodore VN	V8	8/88	8/91	HA5217
Commodore VP	V6	9/91	6/93	HA5217
Commodore VP	V8	9/91	6/93	HA5217
Commodore VR	V6	7/93	3/95	HA5217
Commodore VR	V8	7/93	3/95	HA5217
Commodore VS	V6	4/95	8/97	HA5631
Commodore VS	V8	4/95	8/97	HA5217
Commodore VT	V6	9/97	8/00	HA5631
Commodore VT	5.0Lt V8	9/97	8/00	HA5217
Commodore VT	5.7Lt V8 HSV	9/97	8/00	HA5217
Commodore VT	5.7Lt V8	9/97	8/00	HA5631
Commodore VU Ute	V6	00		HA5631
Commodore VU Ute	5.7Lt V8	00		HA5631
Commodore VX	V6	9/00		HA5631
Commodore VX	5.7Lt V8	9/00		HA5631
Commodore VY	3.6Lt V6	1/10/02		HA5631
Commodore VY	5.7Lt V8	1/10/02		HA5631
Monaro V2C		12/01		HA5631
Statesman WH	V6	6/99		HA5631
Statesman WH	5.7Lt V8	6/99		HA5631
Statesman WK	V6	02		HA5631
Statesman VQ	V6	3/90	5/99	HA5217
Statesman VQ	V	3/90	5/99	HA5217